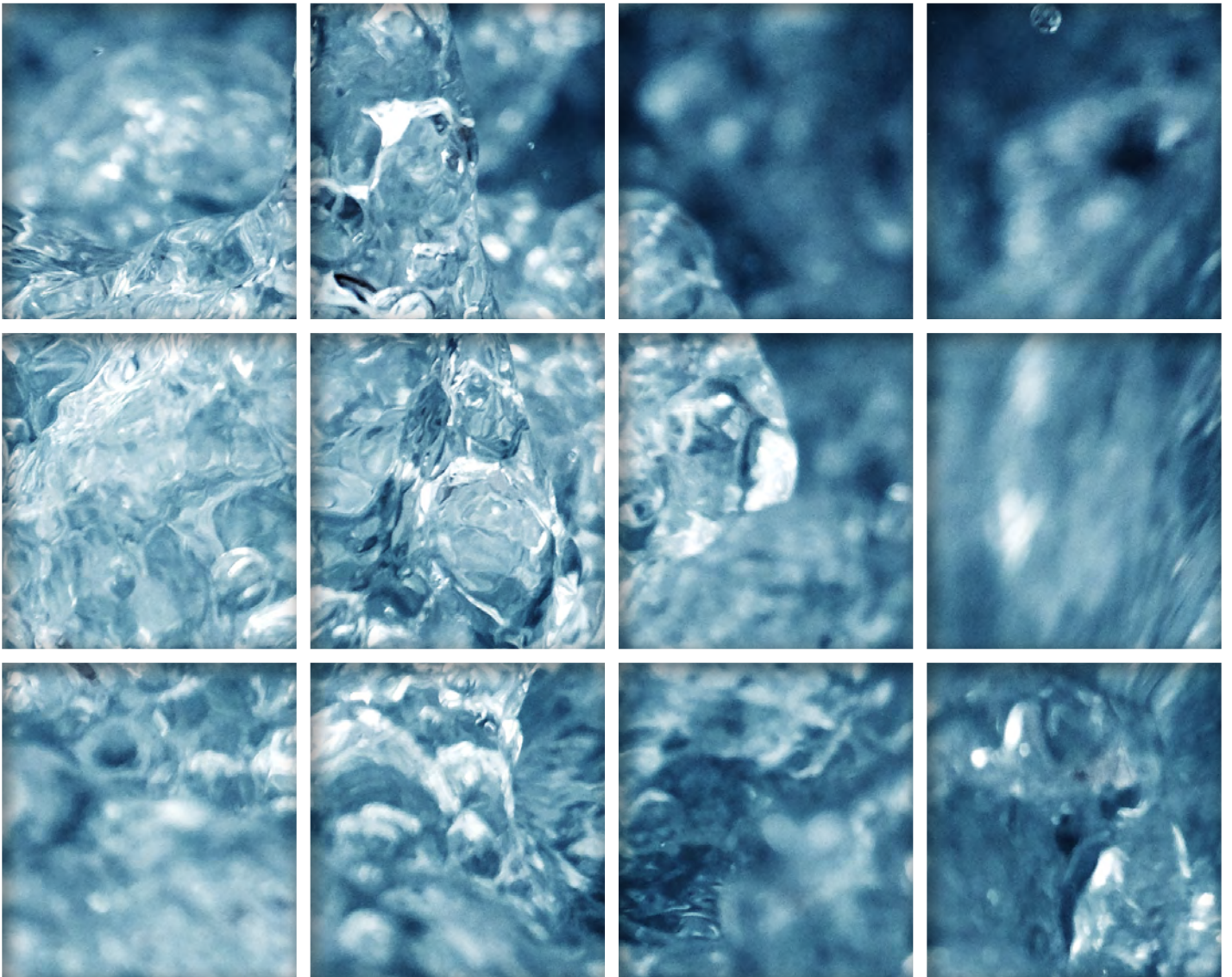




FLUID RESOURCE MANAGEMENT SERVICE GUIDE





FLUID RESOURCE MANAGEMENT

This is where we live.
This is where we play.
THIS IS WHAT WE PROTECT!



ABOUT US

FLUID RESOURCE MANAGEMENT

FRM specializes in water, wastewater, winery and stormwater system operation, maintenance and management. Our highly-specialized and licensed staff provide operations, maintenance, mechanical, controls, compliance and design/build services and emergency response 24 hours per day, 7 days per week, 365 days per year for facilities across California.



Fluid Resource Management (FRM) was founded in 1999 to address the need for contract operations for small water and wastewater systems on California's Central Coast. FRM was one of the first operations and maintenance companies in San Luis Obispo County and quickly became a trusted local water and wastewater resource for public and privately owned facilities and winemakers. FRM is comprised of six divisions each specializing in a particular aspect of water and wastewater treatment: Operations, Maintenance, Mechanical, Controls, Compliance and Operations, Maintenance and Management (OMM). The owners and managing partners have more than a century of combined experience as water and wastewater operators, maintenance technicians, project managers and Chief Plant Operators.

DIVISIONS



OPERATIONS

The Operations Division employs licensed water and wastewater personnel to operate public and privately owned systems throughout California in accordance with discharge permits and regulatory agency requirements. This division strives to keep facilities in compliance while protecting clients' assets, California's water resources and the environment. Clients can contract with FRM for comprehensive management of their facility or select periodic, operational services based on their budget, staffing, location and facility needs.



MAINTENANCE

FRM's Maintenance Division consists of pipefitters, millwrights, electricians, controls technicians, welders and heavy equipment operators that provide troubleshooting, preventative maintenance, equipment repair and emergency response for clients around-the-clock. Preventative maintenance is critical to prevent premature failure of equipment and emergency conditions. When the Maintenance Division contracts with a new client or when equipment fails, technicians look at the remaining useful life of the equipment, schedule warranty work, make repairs and assist clients with ordering new equipment.



MECHANICAL

The Mechanical Division provides rehabilitation, design/build, fabrication, specialty coatings and mechanical construction services throughout California. Staffed by millwrights, machinists, fabricators and project managers, FRM's mechanical crew understands how each system component interacts with the water or wastewater system as a whole. Projects are scheduled to minimize equipment downtime and mobile fabrication equipment allows repairs to be made on-site.



CONTROLS

FRM's Controls Division provides clients with the technology to remotely access, monitor and control their water, wastewater, winery and industrial treatment equipment. FRM's controls staff includes programmers and field technicians that design, program, assemble, install, calibrate and maintain controls systems across California. The controls system allows clients to login and immediately have an at-a-glance, graphic view of their entire plant, including: tank levels, pump and motor activity, graphing and trending of levels and pressure and statistical tracking of important data pertaining to equipment and processes.



COMPLIANCE

Fluid Resource Management's compliance specialists are responsible for working with the internal divisions and outside clients to ensure that all facilities under their stewardship comply with applicable discharge permits and regulatory agency requirements. They review the complete written history of the facility, meet with regulatory agencies on behalf of clients to discuss compliance concerns, resolve violations and then work together with regulators and clients to develop facility compliance plans and master sampling and reporting schedules to facilitate future compliance.



OMM

In addition to services provided divisionally, FRM also offers comprehensive Operations, Maintenance and Management (OMM) services for clients looking to contract with one company that can provide all water and wastewater services necessary to comply with regulatory agency requirements. OMM staff conduct a thorough facility inspection, evaluate current permits, review the maintenance manuals for all major equipment and produce a comprehensive plan to address all system-wide water and wastewater requirements.

EMERGENCY RESPONSE

Fluid Resource Management is staffed to respond quickly to emergency conditions 24 hours per day, 7 days per week, 365 days per year. Staff and equipment from multiple divisions can be mobilized day or night to respond to emergencies that arise at clients' facilities. FRM plans ahead, where practical, to ensure that emergency equipment has been moved on-site prior to foreseeable events such as holidays, storm events and natural disasters.

24
HOURS PER DAY

7
DAYS PER WEEK

365
DAYS PER YEAR

WHAT SETS US APART DURING EMERGENCY CONDITIONS

FRM staff specialize in water, wastewater and winery emergencies

An operator and maintenance technician are always on call together

On-call staff are trained to quickly triage emergency situations to minimize spills, leaks and equipment downtime

Fabricators, electricians, mechanical technicians, pipefitters, controls technicians and hydraulic specialists can provide additional support during emergency conditions

FRM can mobilize vacuum and Vactor trucks, a fleet of gang trucks with cranes and a 15 ton crane to assist the on-call staff

For systems controlled by FRM's SCADA program, operators can remotely assess alarm conditions and make immediate operational changes

FRM can supply bypass pumping equipment and controls

Operations and Maintenance Division staff monitor major weather events and adjust on-call staff and stand-by generator placement accordingly

FRM can assist with emergency aftermath including equipment repairs and regulatory agency reporting



“

STATE OF CALIFORNIA REGIONAL WATER QUALITY CONTROL BOARD CENTRAL COAST REGION COMMENDS FLUID RESOURCE MANAGEMENT FOR THEIR EXTRAORDINARY EFFORTS TO PREVENT WATER QUALITY IMPAIRMENT AT THE SAN SIMEON WASTEWATER TREATMENT PLANT IN THE AFTERMATH OF THE DECEMBER 22, 2003, SAN SIMEON EARTHQUAKE.

VIOLATIONS AND FINES



ARE VIOLATIONS AND FINES PILING UP?



COMPLIANCE DIVISION

Clients have access to FRM's team of compliance specialists who are experienced in resolving violations



REGULATORY AGENCY LIAISON

FRM can act as a liaison between clients and local, state and federal regulatory agencies



MORE THAN 100 YEARS OF EXPERIENCE

FRM's ownership team has more than 100 years of combined water and wastewater industry experience

Fluid Resource Management specializes in helping clients who are facing regulatory agency violations and fines get back into compliance. Compliance specialists work with clients and regulators to determine why the facility is in violation and then remedy the areas of non-compliance. Once a facility is no longer in violation, FRM can create a facility compliance plan that includes master sampling and reporting schedules and train facility staff to facilitate continued compliance.

SERVICES TO HELP CLIENTS FACING VIOLATIONS AND FINES

FRM can act as a liaison between clients and regulators

Master sampling and reporting schedule preparation and updating

Delinquent report preparation and submittal

Establish exceedance parameters and response procedures

Assist facility management with determining violation causes and corrective actions

Complete deferred maintenance and review or prepare preventative maintenance schedules

Collect process and permit samples

Coordinate sample analysis by local ELAP laboratories

Provide California licensed water and wastewater operators to operate the system

Prepare and deliver sample bottles

Create custom reporting templates and schedule automatic reminders

Assist with capital improvement project priority lists and budgets

Monthly, quarterly, semi-annual and annual facility inspections

Conduct staff training



WATER

Fluid Resource Management currently operates and maintains dozens of water treatment and distribution systems, both public and privately owned. FRM supplies licensed staff and industry equipment and offers an extensive list of services to help water purveyors maintain compliance with regulatory agency requirements. Services range from preparing annual reports to daily system checks and can be tailored to meet the water purveyor's needs. Operators stay current on water regulation changes and work with purveyors on how to apply them to their system to ensure continued compliance. FRM's controls system alerts staff to emergency conditions 24 hours per day, 7 days per week, 365 days per year. FRM also works with water purveyors and their board members on forecasting capital improvement projects and preparing budgets.



WHAT SETS US APART?

- *FRM has an outstanding reputation in the industry that spans decades*
- *Staff members have experience operating a wide variety of water treatment systems*
- *FRM stocks extensive spare parts*
- *Maintenance staff receive training from multiple equipment manufacturers and have unparalleled water system problem solving skills*
- *FRM is staffed to provide 24/7/365 emergency response from operators and maintenance mechanics*
- *Multiple staff are trained at every facility for overlapping coverage*
- *Staff members have excellent relationships with regulatory agencies*
- *FRM owns a variety of specialized water system equipment*
- *Water system staff are trained and licensed by the State of California*
- *Relationships with local vendors allow staff to quickly procure replacement parts*

OPERATIONS

- Operation of facility equipment by licensed staff
- Sample collection and laboratory delivery
- Regulatory agency reporting
- Representation at facility inspections
- Daily controls system checks
- Budgetary planning for operations and capital improvement projects
- 24/7/365 emergency response
- System flushing
- Meter installation, replacement and reading
- Hydrant and valve maintenance
- Chlorination and dechlorination of wells and water lines
- Fire flow testing
- Facility start-up and training
- Instrumentation calibration

MECHANICAL

- Design, construction, installation and rehabilitation of booster pump stations, reverse osmosis systems, arsenic and nitrate removal systems and water treatment plants
- Specialty coatings (NSF certified)
- Assistance with bid packages
- Rehabilitation and installation of large pieces of equipment
- Installation of water tanks and integration into new or existing water system equipment
- Engineering and design team support

COMPLIANCE

- System review for areas of non-compliance and recommendations for corrective action
- Review of Domestic Water Supply Acquisition Permits, inspection reports and monitoring schedules
- Preparation and renewal of sampling schedules
- Electronic Annual Reporting (EAR) and submittal to regulatory agencies
- Assistance with consumer notifications of exceedances
- Timely monitoring of laboratory uploads to verify that sampling requirements are met
- Preparation of annual Consumer Confidence Reports (CCR) for distribution to consumers



MAINTENANCE

- Electrical troubleshooting and diagnostic testing
- Pump and equipment installation, repair and replacement
- Controls system upgrades
- Pressure logging for system diagnosis
- Chemical system installation and troubleshooting
- Cla-Val installation and repair
- Asset management
- Maintenance reports
- Staff are trained as confined space entrants, attendants and supervisors
- Vacuum and Vactor truck services
- Flow monitoring
- Facility-specific preventative maintenance schedules using manufacturers' guidelines, industry standards and the client's budget
- Well depth monitoring
- On-site fabrication

CONTROLS

- Custom controls system packages including design and installation
- Remote or on-site troubleshooting
- Programming
- Remote data collection and statistical reporting
- Custom electrical panels
- Start-up assistance and training
- Internet access coordination
- Emergency condition response list programming

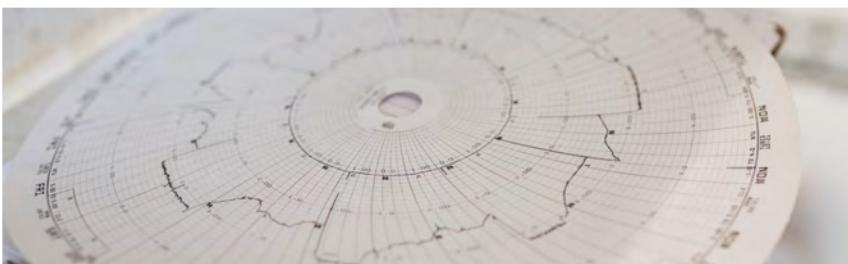
OMM

- Performance evaluations of facility staff
- Comprehensive facility reporting
- Assistance and with facility and capital improvement project budgets and schedules
- Regulatory agency liaison
- Coordination of and attendance at meetings
- Facility presentations and tours



WASTEWATER

Since 1999, Fluid Resource Management has provided contract operations, maintenance, mechanical, controls and compliance services to wastewater clients across California. Clients can choose from a variety of periodic, à la carte services or contract with FRM to provide comprehensive management of their facility. FRM employs licensed and experienced operators who act as stewards of clients' equipment and facilities and liaisons between regulators and clients to facilitate compliance with discharge requirements. FRM can also provide interim contract operations and maintenance services due to personnel changes, an extended recruitment process or to train facility staff. During this process, FRM trains current staff members and assists with hiring qualified personnel to ensure a seamless transition for both the facility and its customers.



WHAT SETS US APART?

- *The Operations Division develops spill response programs for a diverse range of facilities*
- *FRM can provide local wastewater systems with manpower during staff vacations and absences*
- *Operators specialize in helping non-compliant systems get back into compliance*
- *FRM has operated nearly 100 wastewater treatment plants since inception*
- *Experienced staff can provide consultation on operational challenges or plant upset conditions*
- *The Operations Division provides troubleshooting and consulting services for wastewater treatment problems encountered by staff at facilities not operated by FRM*

OPERATIONS

- Facility start-up and training
- Operation of facility equipment by licensed operators
- Sample collection and laboratory delivery
- Regulatory agency reporting
- Representation at facility inspections
- Daily controls system checks
- Budgetary planning for operations and capital improvement projects
- 24/7/365 emergency response
- Interim and emergency staffing
- Bypassed system operation during repairs and rehabilitation
- Instrumentation calibration

MECHANICAL

- Design, construction and installation of new wastewater treatment plants and large pieces of equipment
- Rehabilitation of wastewater treatment plants and equipment including: headworks, screening systems, clarifiers, aerators, digesters and tertiary filters
- Design, construction and installation of new lift stations
- Installation of package wastewater treatment plants
- Design and installation of bypassing equipment
- Manhole and lift station rehabilitation
- Specialty coatings of steel and concrete equipment and structures

COMPLIANCE

- System review for areas of non-compliance and recommendations for corrective action
- Electronic data submittal through California Integrated Water Quality System (CIWQS) and Geotracker
- Review of Waste Discharge Requirements (WDR) and preparation of custom Self-Monitoring Report (SMR) templates
- Individualized sampling schedules
- Timely monitoring of laboratory uploads to verify that sampling requirements are met
- Preparation and submittal of outstanding and upcoming SMR and Discharger Monitoring Reports (DMR) to regulatory agencies



MAINTENANCE

- Electrical troubleshooting and diagnostic testing
- Sewer flow monitoring
- Pump and equipment installation, repair and replacement
- Controls system upgrades
- Sewer cleaning
- Chemical system installation and troubleshooting
- Tank de-gritting and cleaning
- Aerator installation, repair and maintenance
- Lift station analysis, repair and maintenance
- On-site fabrication
- Maintenance reports
- Asset management
- Vacuum and Vactor truck services
- Staff are trained as confined space entrants, attendants and supervisors
- Sludge hauling coordination
- Pond sludge depth measurements
- Facility-specific preventative maintenance schedules using manufacturers' guidelines, industry standards and the client's budget

CONTROLS

- Custom SCADA/controls packages including design and installation
- Programming
- Remote data collection and statistical reporting
- Custom electrical panels
- Start-up assistance and training
- Internet access coordination
- Emergency condition response list programming

OMM

- Performance evaluations of facility staff
- Comprehensive facility reporting
- Regulatory agency liaison
- Assistance with facility and capital improvement project budgets and schedules
- Coordination of and attendance at meetings
- Facility presentations and tours



WINERIES

Fluid Resource Management is the leading provider of water and wastewater services to wineries in San Luis Obispo and Santa Barbara Counties. FRM has been installing, operating and maintaining winery wastewater treatment systems for over two decades, and has become a trusted resource for winemakers, design engineers and process waste equipment suppliers. FRM works with winemakers and their staff to balance facility needs and budgetary constraints. Licensed and experienced staff operate and maintain clients' equipment and facilitate compliance with regulatory agency requirements.



WHAT SETS US APART?

- *FRM has been operating and maintaining winery wastewater treatment plants since 1999*
- *All treatment plant operations are performed by California licensed wastewater operators*
- *FRM specializes in plant operation and maintenance both during and off crush*
- *Maintenance packages can help clients prepare their winery systems prior to crush*
- *Clients can choose from services ranging from turn-key operations to training programs to help facility staff to operate and maintain their own system*
- *FRM can perform wastewater system modifications to meet winery needs*
- *Clients can reclaim 100% of their treated effluent for irrigation or sanitation purposes*

OPERATIONS

- Facility start-up and training
- Operation of facility equipment by licensed staff
- Sample collection and laboratory delivery
- Regulatory agency reporting
- Representation at facility inspections
- Daily controls system checks
- Sensory equipment calibration
- Budgetary planning for operations and capital improvement projects
- 24/7/365 emergency response
- Bypassed system operation during repairs and rehabilitation
- Sludge press operations

MECHANICAL

- Design, construction, installation and rehabilitation of booster pump stations, Reverse Osmosis (RO), arsenic, aeration and pH adjustment systems, treatment ponds and water and wastewater treatment plants
- Installation of water tanks and integration into new or existing water system equipment
- Pre-commissioning and system start-up
- Installation of package wastewater treatment plants
- Site work including concrete slabs, tank setting and electrical connections
- Sensory equipment installation and calibration
- Manhole and lift station design, construction, installation, rehabilitation and specialty coatings

COMPLIANCE

- System review for areas of non-compliance and recommendations for corrective action
- Review of Industrial Waste Discharge Requirements and preparation of custom Self-Monitoring Report (SMR) templates
- Timely monitoring of laboratory uploads to verify that sampling requirements are met
- Individualized sampling schedules
- Reminders for specific permit monitoring required during crush
- Prepare and submit outstanding and upcoming SMRs



MAINTENANCE

- Electrical troubleshooting and diagnostic testing
- Pump and equipment installation, repair and replacement
- Controls system upgrades
- Sludge hauling coordination
- pH adjustment system repair
- Tank de-gritting and cleaning
- Aerator installation, repair and maintenance
- On-site fabrication
- Maintenance reports
- Asset management
- Vacuum and Vactor truck services
- Pond sludge depth measurements
- Facility-specific preventative maintenance schedules using manufacturers' guidelines, industry standards and the client's budget
- Staff are trained as confined space entrants, attendants and supervisors

CONTROLS

- Custom SCADA/controls packages including design and installation
- Programming
- Remote data collection and statistical reporting
- Custom electrical panels
- Start-up assistance and training
- Internet access coordination
- Emergency condition response list programming

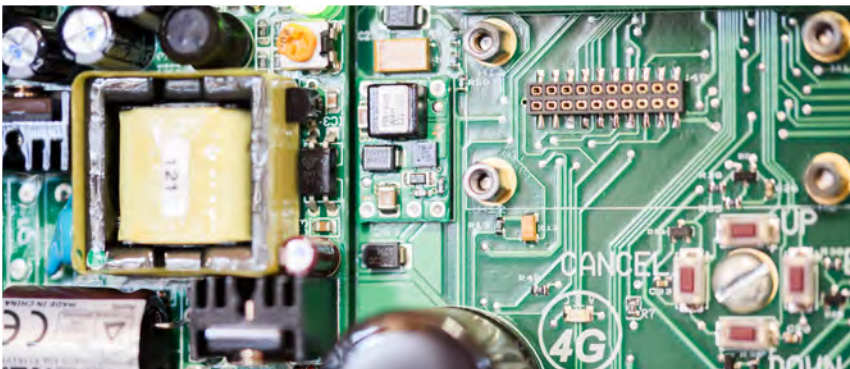
OMM

- Performance evaluations of facility staff
- Comprehensive facility reporting
- Regulatory agency liaison
- Assistance with facility and capital improvement project budgets and schedules
- Coordination of and attendance at meetings
- Tailored services when the facility is on and off crush
- Facility presentations and tours



STORMWATER

The Compliance Division employs Qualified Industrial Stormwater Practitioners (QISP) to oversee reporting and compliance for stormwater clients. FRM has extensive experience with Stormwater Pollution Prevention Plans (SWPP) and Best Management Practices (BMP) review, preparation and implementation. Compliance specialists can also provide client training, Level 1 and Level 2 Exceedance Response Actions (ERA), prepare sampling schedules and coordinate with the ELAP-certified laboratories for bottle preparation and delivery. FRM staff carefully monitors storm events that may trigger sampling requirements and notifies clients that may be affected.



WHAT SETS US APART?

- *On-staff Qualified Industrial Stormwater Practitioner (QISP) that provides QISP Services across California*
- *FRM has more than two decades of experience with stormwater systems*
- *À la carte services or full system management*
- *Clients receive major weather event notifications and reminders*
- *Comprehensive stormwater training program for facility staff*
- *Master sampling and reporting schedules that are customized for each client*
- *FRM has relationships with regulatory agencies that span decades*

STORMWATER SYSTEM SERVICES BY DIVISION

OPERATIONS

- Collection of routine and special project samples
- Sample delivery to ELAP-certified laboratories
- Operation of the facility's stormwater system by licensed staff
- 24/7/365 emergency response

MECHANICAL

- Manhole and lift station rehabilitation and specialty coatings
- Design, construction and installation of new stormwater pump stations

COMPLIANCE

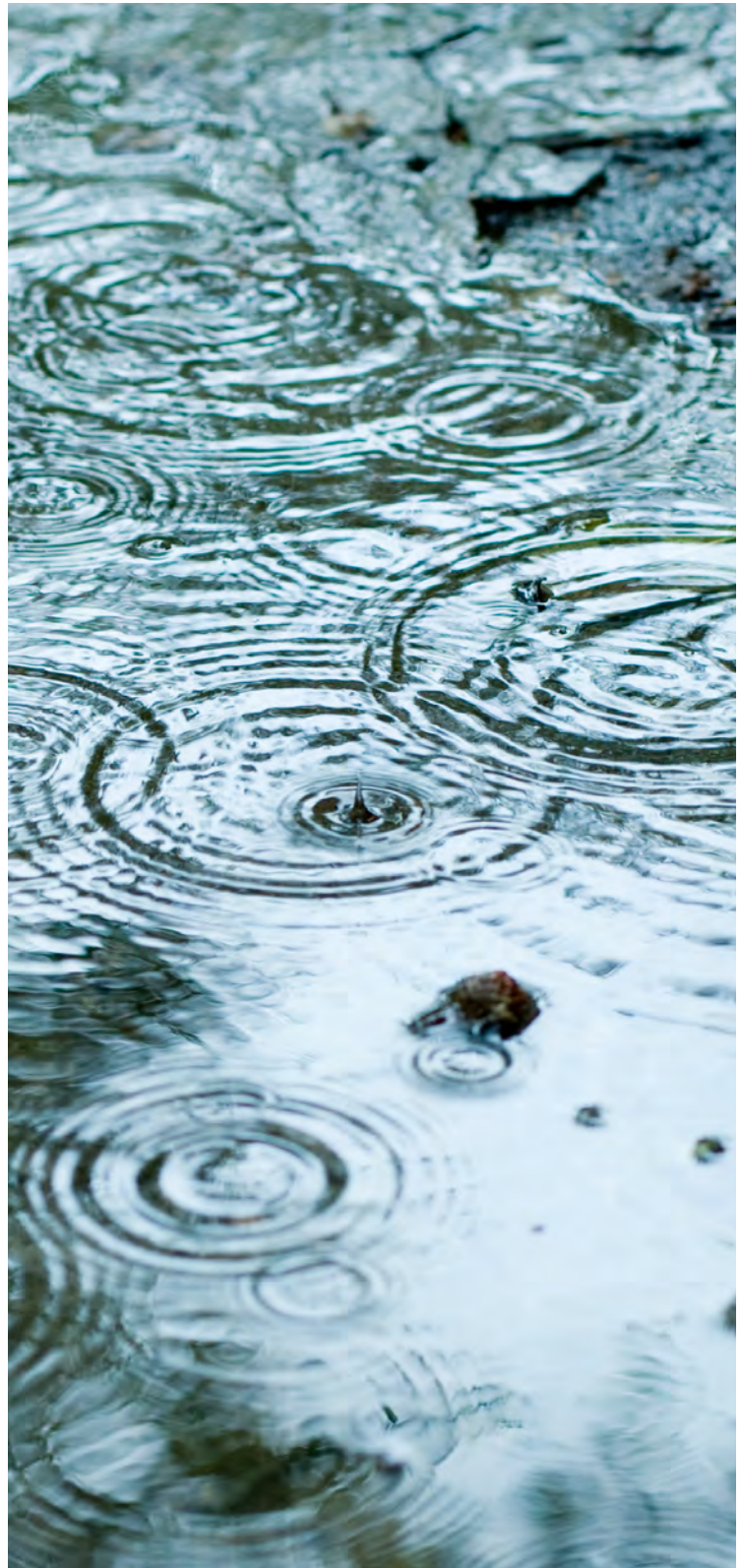
- Exceedance evaluation reports and exceedance response action reports
- Annual reporting uploaded to Stormwater Multiple Application and Report Tracking System (SMARTS)
- Industrial Stormwater Pollution Prevention Plans (SWPPP)
- On-site compliance evaluations
- Guidance and documentation for visual inspections and storm events
- Sampling plans and training for facility staff
- Stormwater Best Management Practices (BMP) development and implementation
- Preparation of sample bottles and chains of custody

MAINTENANCE

- Electrical troubleshooting and diagnostic testing
- Pump and equipment installation, repair and replacement
- Controls system upgrades
- Flow monitoring
- Storm water sump and line cleaning
- On-site fabrication
- Maintenance reports
- Vacuum and Vactor truck services
- Facility-specific preventative maintenance schedules using manufacturers' guidelines, industry standards and the client's budget
- Staff are trained as confined space entrants, attendants and supervisors

QISP SERVICES FOR LEVEL 1 OR LEVEL 2

INDUSTRIAL GENERAL PERMIT COVERAGE





CONSTRUCTION

With two decades of experience in the water, wastewater, winery and stormwater industries, Fluid Resource Management has become a valued resource for architects, engineering firms and contractors across California. FRM is often asked to consult with and subcontract to other contractors on larger projects when they need assistance installing complex systems requiring both technical skills and industry knowledge. Additionally, the extensive knowledge of the hydraulic, biological and mechanical principles associated with water and wastewater treatment allows FRM to provide design assistance and installation to architects and engineering firms across the state. FRM offers a variety of construction industry support services, which include: process and treatment method consultation, value engineering, biological process troubleshooting, facility staff evaluations, flow monitoring and studies, Operation and Maintenance Manual (OMM) development and equipment useful life studies.



WHAT SETS US APART?

- FRM has completed installation and rehabilitation projects for clients including small community service districts, wineries, municipalities, developers and federal military installations
- FRM's mechanical crew specializes in the precise installation of water, wastewater and winery equipment
- Staff members have extensive knowledge of the biological, hydraulic and mechanical principles associated with water and wastewater treatment
- Almost all contracted services are performed in-house
- Clients often approach FRM with only conceptual project details and then rely on the Mechanical Division to design, build and install the project
- Mechanical project managers are able to collaborate with FRM's operations and maintenance staff on system design and operability prior to construction
- Agile mechanical teams allow FRM to move in and out of projects when unforeseen site conditions, permit delays, weather events and unsafe conditions arise

OPERATIONS

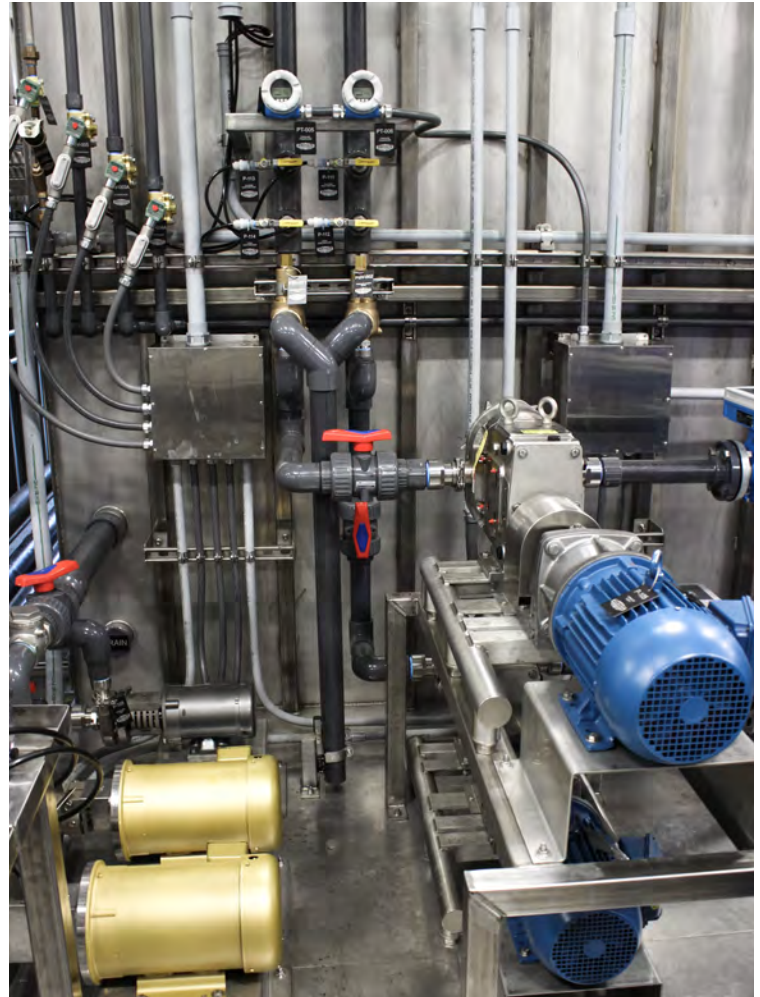
- System flushing
- Chlorination and dechlorination of wells and water lines
- Interim and emergency staffing
- Facility start-up and training
- Regulatory agency reporting
- Representation at facility inspections
- Budgetary planning for operations and capital improvement projects
- Bypassed system operation during repairs and rehabilitation
- Fire flow testing
- System evaluations
- Process troubleshooting
- Review of design documents and plans for operability

MECHANICAL

- Design, construction, installation and rehabilitation of booster pump stations, Reverse Osmosis (RO), arsenic, aeration and pH adjustment systems, treatment ponds and water and wastewater treatment plants and equipment
- Installation of package wastewater treatment plants
- Installation of water tanks and integration into new or existing water system equipment
- Construction, engineering and design team support
- Budgetary evaluations
- Specification review
- Value engineering
- Design and installation of bypassing equipment
- Specialty coatings
- Pre-commissioning and start-up services
- Subcontracting

COMPLIANCE

- System review for areas of non-compliance and recommendations for corrective action
- Reports uploaded to Stormwater Multiple Application and Report Tracking System (SMARTS)
- On-site compliance evaluations
- Training for facility staff on implementation of stormwater Best Management Practices (BMP)



MAINTENANCE

- Pressure logging for system diagnosis
- Chemical system installation and troubleshooting
- Staff are trained as confined space entrants, attendants and supervisors
- Controls system upgrades
- Flow monitoring
- Facility-specific preventative maintenance schedules using manufacturers' guidelines, industry standards and the client's budget
- Vacuum and Vactor truck services

CONTROLS

- Start-up assistance and training
- Custom electrical panels
- Internet access coordination
- Remote data collection and statistical reporting
- Custom SCADA/controls packages including design and installation
- Emergency condition response list programming



AGRICULTURE

Many farms, greenhouses, large irrigation systems and agricultural wells are subject to regulatory agency requirements relating to their water and wastewater systems. FRM's licensed and experienced staff assist agricultural clients with the installation, operation, maintenance and compliance of their water and wastewater systems. Services are tailored to meet regulatory agency regulations, facility needs and budgetary constraints. Fluid Resource Management's Maintenance and Mechanical Divisions have decades of experience in installing, maintaining, repairing and responding to emergencies for large and complex pumping and irrigation systems. With continued pressure from the State of California to conserve water and ensure irrigation equipment is efficient, FRM works with agricultural clients to design, install, operate, maintain and control conservation-friendly equipment.

WHAT SETS US APART?

- *Fluid Resource Management has extensive experience with designing, installing and maintaining large, complex irrigation systems*
- *Maintenance technicians have factory training from several large pumping system manufacturers*
- *Compliance specialists can help clients implement and comply with the vast permits and regulations affecting agricultural water and wastewater systems*
- *Operators and maintenance technicians have experience with a variety of agricultural systems*

OPERATIONS

- System flushing
- Interim and emergency staffing
- Facility start-up and training
- Operation and maintenance of facility equipment by licensed staff
- Regulatory agency reporting and representation at facility inspections
- Daily controls system checks
- Sensory equipment calibration
- 24/7/365 emergency response
- Collection of routine and special project samples and delivery to ELAP-certified laboratories
- Waste Discharge Requirement (WDR) reporting
- Composite sampling
- Chlorination and dechlorination of wells and water lines
- Operational system evaluations
- Process troubleshooting

MECHANICAL

- Design, construction and installation of new wastewater treatment plants and large pieces of equipment
- Design and installation of bypassing equipment
- Specialty coatings
- Installation of water tanks and integration into new or existing water system equipment
- Installation of package wastewater treatment plants
- Site work including concrete slabs, tank setting and electrical connections
- Sensory equipment installation and calibration
- Design, construction and installation of new lift stations
- Budget assistance
- Specification review
- Piping and pump installation and rehabilitation
- Mobile fabrication
- Design, construction and installation of water systems



COMPLIANCE

- Review of domestic Water Supply Acquisition Permits and inspection reports
- Electronic Annual Reporting (EAR) and submittal to regulatory agencies
- Assistance with consumer notifications of exceedances
- Chain of custody and sample result monitoring as they are uploaded by labs to verify that requirements are met
- Annual Consumer Confidence Report (CCR) preparation for distribution to consumers
- System review for areas of non-compliance and recommendations for corrective action
- Individualized sample schedules with reminders for upcoming sampling
- Sampling plans and training for facility staff

MAINTENANCE

- Pressure logging for system diagnosis
- Chemical system installation and troubleshooting
- Cla-Val installation and repair
- Well depth monitoring
- Staff are trained as confined space entrants, attendants and supervisors
- Pump and equipment installation, repair and replacement
- Aerator installation, repair and maintenance
- Pond sludge depth measurements
- Electrical troubleshooting and diagnostic testing
- Controls system upgrades
- Facility-specific preventative maintenance schedules using manufacturers' guidelines, industry standards and the client's budget
- Maintenance reports
- Vacuum and Vactor truck services
- Asset management

CONTROLS

- Start-up assistance and training
- Custom SCADA/controls packages including design, installation and electrical panels
- Programming and troubleshooting
- Remote data collection and statistical reporting
- Internet access coordination
- Emergency condition response list programming



WATER



WASTEWATER



WINERIES

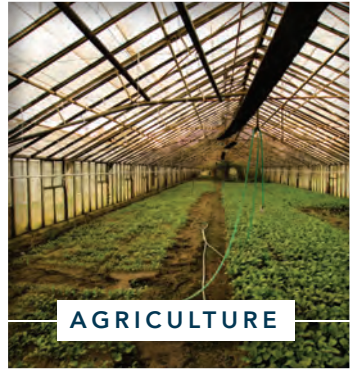


STORMWATER

   
805.597.7100
FRMINFO@FRM-OPS.COM
FLUIDRESOURCEMANAGEMENT.COM
CONTRACTORS LICENSE NO. 937346
© Copyright 2019 Fluid Resource Management - All Rights Reserved



CONSTRUCTION



AGRICULTURE

FLUID RESOURCE MANAGEMENT

2385 PRECISION DRIVE
ARROYO GRANDE, CA 93420